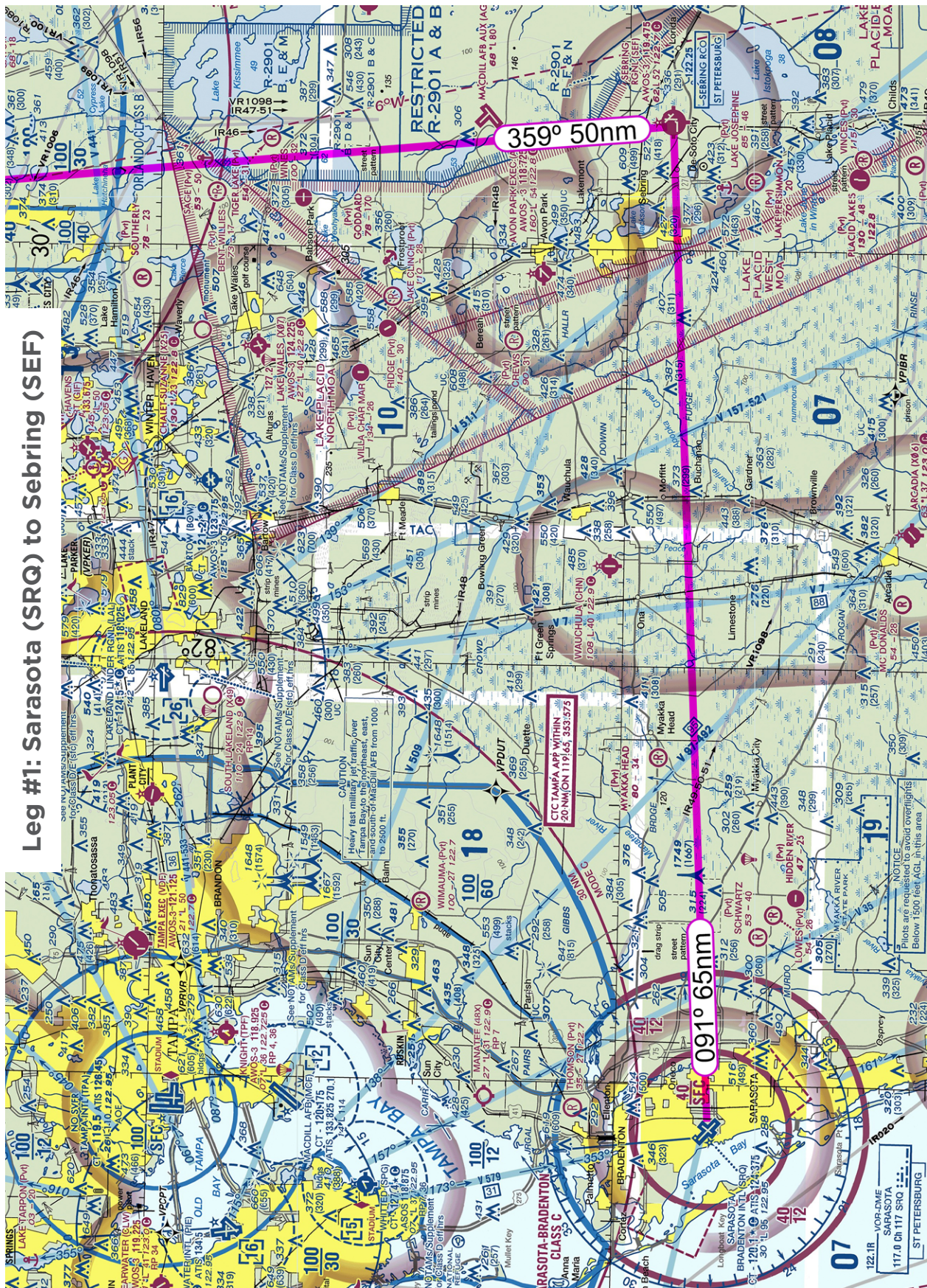




RUSTY PILOTS  
POWERED BY AOPA

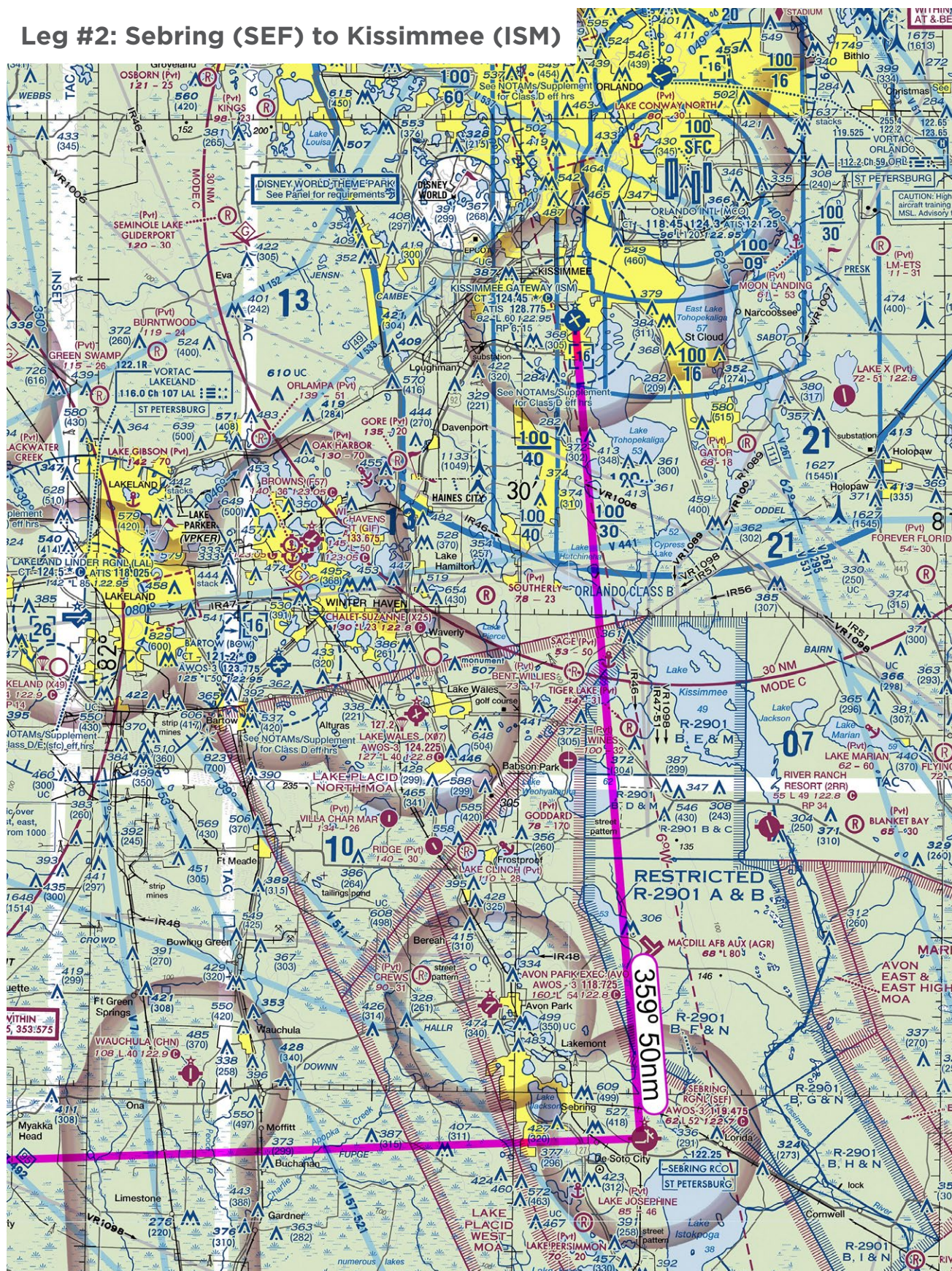




Charts are courtesy of skyvector.com All slides and charts are for educational purposes only. Not for navigation.



## Leg #2: Sebring (SEF) to Kissimmee (ISM)



Charts are courtesy of skyvector.com. All slides and charts are for educational purposes only. Not for navigation.



## SAMPLE MAINTENANCE LOGS

Maintenance Log entries courtesy of  
**www.mcvinnieaviation.com.**

### Airworthiness Directives

AD Number Effective Date	Description	Complied Date Time	Status Method of Compliance/ Applicability	Once or Recur	Next Due Date Time	1. Facility 2. Cert. Type 3. Cert. Num. 4. Author. by
2011-10-09 6/17/2011	Seat Rails and Roller Housing Inspections	10/23/This Year 1720.7 Tach	Inspected IAW AD 2011-10-09	Recur (every 100hr or 12 mo.)	10/31/Next Year or 1820.7 Tach	1. Flyrite Air Service 2. Repair Station 3. RUCRZY812 4. Jamie F. Rida
2008-26-10 1/5/2009	Alternate static air source selector valve	04/23/2013 1250.3 Tach	Inspected, removed, and reinstalled placard IAW AD 2008-26-10	Once	N/A	1. Flyrite Air Service 2. Repair Station 3. RUCRZY812 4. Jamie F. Rida
2008-10-02 5/12/2008	Part number identification placard	04-23-2015 1250.3 Tach	N/A by part not installed	Once	N/A	N/A
“	“	“	“	“	“	“

### Airframe, Propeller, and Engine Logs

12 SEPT THIS YEAR, TACH: 1680.1, AFTT: 3134.2

N14GA, Cessna 182R, S/N 182R9919

ANNUAL INSPECTION COMPLETED USING CESSNA 182R INSPECTION MANUAL AS A GUIDE. INSPECTED ALL CONTROLS, CABLES, PULLEYS, FLUID AND PNEUMATIC PLUMBING, ELECTRICAL WIRING, SURFACES AND STRUCTURES. CLEANED, INSPECTED AND RE-PACKED ALL WHEEL BEARINGS. C/W CESSNA SERVICE BULLETIN SEB07-5 BY INSTALLING SECONDARY SEAT STOPS ON PILOT AND CO-PILOT SEATS, NEXT DUE BY AFTT 3234.2. INSTALLED NEW VACUUM REGULATOR FILTER. REINSTALLED 8-DAY CLOCK AFTER REPAIR. INSPECTED ELT IAW FAR 91.207D AND FOUND AIRWORTHY FOR RETURN TO SERVICE. ELT BATTERIES DUE REPLACEMENT 03/NEXT YEAR. RCPI BATTERY DUE REPLACEMENT 02/ NEXT YEAR. PRESSURE CHECKED EXHAUST SYSTEM, STRIPPED, REPAIRED AND PAINTED BATTERY BOX. CLEANED AND CHARGED BATTERY. INSTALLED BOGERT AVIATION STCS SA4008NM BATTERY BOX MODIFICATION AND BATTERY CABLES. SEE FAA FORM 337S DATED 6/25/2005. AD 2005-01-19 GTX 330 TRANSPONDER P/C/W 4/19/2005 SOFTWARE VERSION 6.0. AD 2005-11-05 PRECISE FLIGHT STANDBY VACUUM N/A BY MODEL NUMBER. I CERTIFY THAT THIS AIRCRAFT HAS BEEN INSPECTED IN ACCORDANCE WITH AN ANNUAL INSPECTION AND HAS BEEN FOUND AIRWORTHY FOR RETURN TO SERVICE.

Mr. I Can Fixit, A&P 123456 IA *I. Can Fixit*



18 July This Year, TACH: 1585.3, AFTT: 3036.7

N14GA, Cessna 182R, S/N 182R9919

Serviced Battery, lubed control cables and pulleys, serviced tires. I certify this aircraft has been inspected IAW a 100-hour inspection and was determined to be in an airworthy condition.

Mr. I Can Fixit, A&P 123456 *I. Can Fixit*

20 DEC 2 Years Ago, TACH: 1270.5

I certify that the Altimeter and Transponder tests and inspections required by Parts - 91.411 and 91.413 have been performed on:

L/H Altimeter - S/N N9284 Tested to FT 20,000

R/H Altimeter S/N N/A Tested to FT N/A

#1 TXP S/N 10797 91.217 C/W JSC

Date and Altitude placard placed on Altimeter JSC

Re-certification will be required in 24 months on 12/31/This Year

Complies with FAA Part 43 App. F. Date: 8 July 2005

This aircraft and/or components are certified to be airworthy for return to service with respect to the above work performed.

Shop Order - # 105394 CRS # ABC1234

Ace Avionics, Albuquerque NM.

Signed: *J Spark Chaser*

#### PROPELLER LOG:

12 SEPT This Year, TACH: 1680.1, TSO: 980.2, TT: 1387

N12345, HARTZELL BHC-C2YF-1, S/N: 911805

I CERTIFY THIS PROPELLER HAS BEEN INSPECTED IN ACCORDANCE WITH AN ANNUAL INSPECTION AND IS AIRWORTHY FOR RETURN TO SERVICE.

Mr. I Can Fixit, A&P 123456 IA *I. Can Fixit*

#### ENGINE LOG:

12 SEPT This Year, TACH: 1680.1, TSMOH: 977.2

CONTINENTAL O-470L, S/N RL19635-51A

PERFORMED ANNUAL INSPECTION ON ENGINE. CHANGED OIL AND FILTER. INSPECTED FILTER. FILLED ENGINE WITH 12 QTS. AEROSHELL 15W50 OIL. CLEANED, GAPPED AND TESTED PLUGS. TESTED IGNITION HARNESS. C.W. 500 HOUR INSPECTION ON MAGNETOS. COMPRESSION CHECK: #1 78/80, #2 76/80, #3 78/80, #4 76/80, #5 79/80, #6 78/80. C.W. AD 2012-03-06 BY REPLACING FUEL SERVO DIAPHRAGM. I CERTIFY THIS ENGINE HAS BEEN INSPECTED IAW AN ANNUAL INSPECTION AND HAS BEEN FOUND TO BE IN AIRWORTHY CONDITION AT THIS TIME.

Mr. I Can Fixit, A&P 123456 IA *I. Can Fixit*



## PREVENTATIVE MAINTENANCE

(c) Preventive maintenance. Preventive maintenance is limited to the following work, provided it does not involve complex assembly operations:

- (1) Removal, installation, and repair of landing gear tires.
  - (2) Replacing elastic shock absorber cords on landing gear.
  - (3) Servicing landing gear shock struts by adding oil, air, or both.
  - (4) Servicing landing gear wheel bearings, such as cleaning and greasing.
  - (5) Replacing defective safety wiring or cotter keys.
- ... Plus 26 more! (43 App. A)

## WEATHER REPORTS/FORECASTS

Let's review some basic weather reports/forecasts.  
Note: UTC -5 (-4 DT)

### METARs

KSRQ 311553Z 09007KT 10SM FEW055 29/17 A3012 RMK AO2

KISM 311550Z 08010KT 10SM BKN044 27/18 A3019

Location/ Date & Time/ Wind/ Visibility/ Precip/ Cloud Cover/ Temp & Dewpoint/ Altimeter setting

### TAFs (Note: Issued 0z, 6z, 12z 18z)

KSRQ 311130Z 3112/0112 06016G25KT P6SM SCT050

FM311400 06009KT P6SM FEW050

FM312300 07012KT P6SM FEW050 SCT250

KISM 311139Z 3112/0112 06015G22KT P6SM SCT045 BKN060

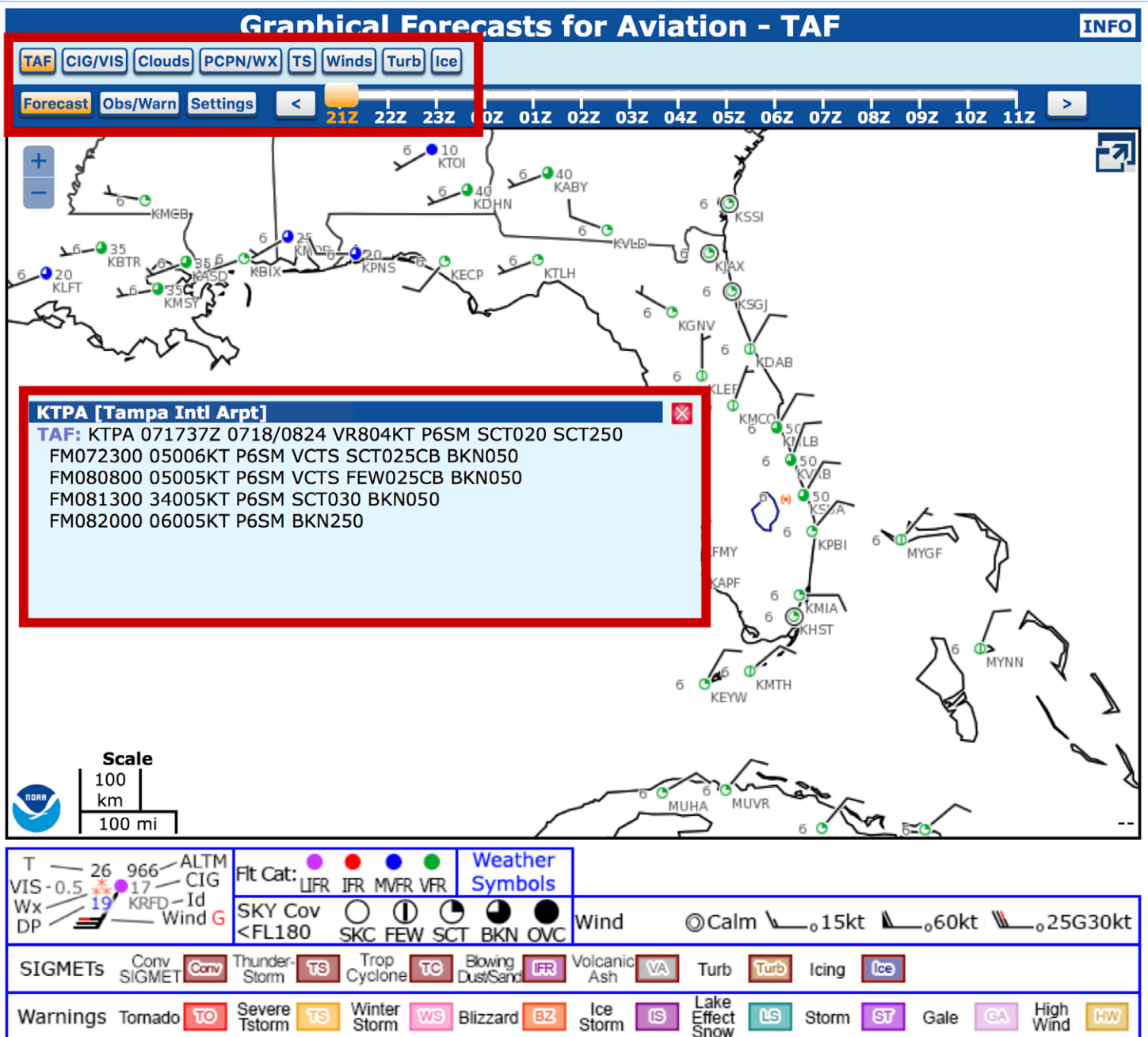
FM311500 03008KT P6SM SCT030 SCT060

FM311900 01006KT P6SM FEW030

FM010200 06012G18KT P6SM SCT040 SCT080



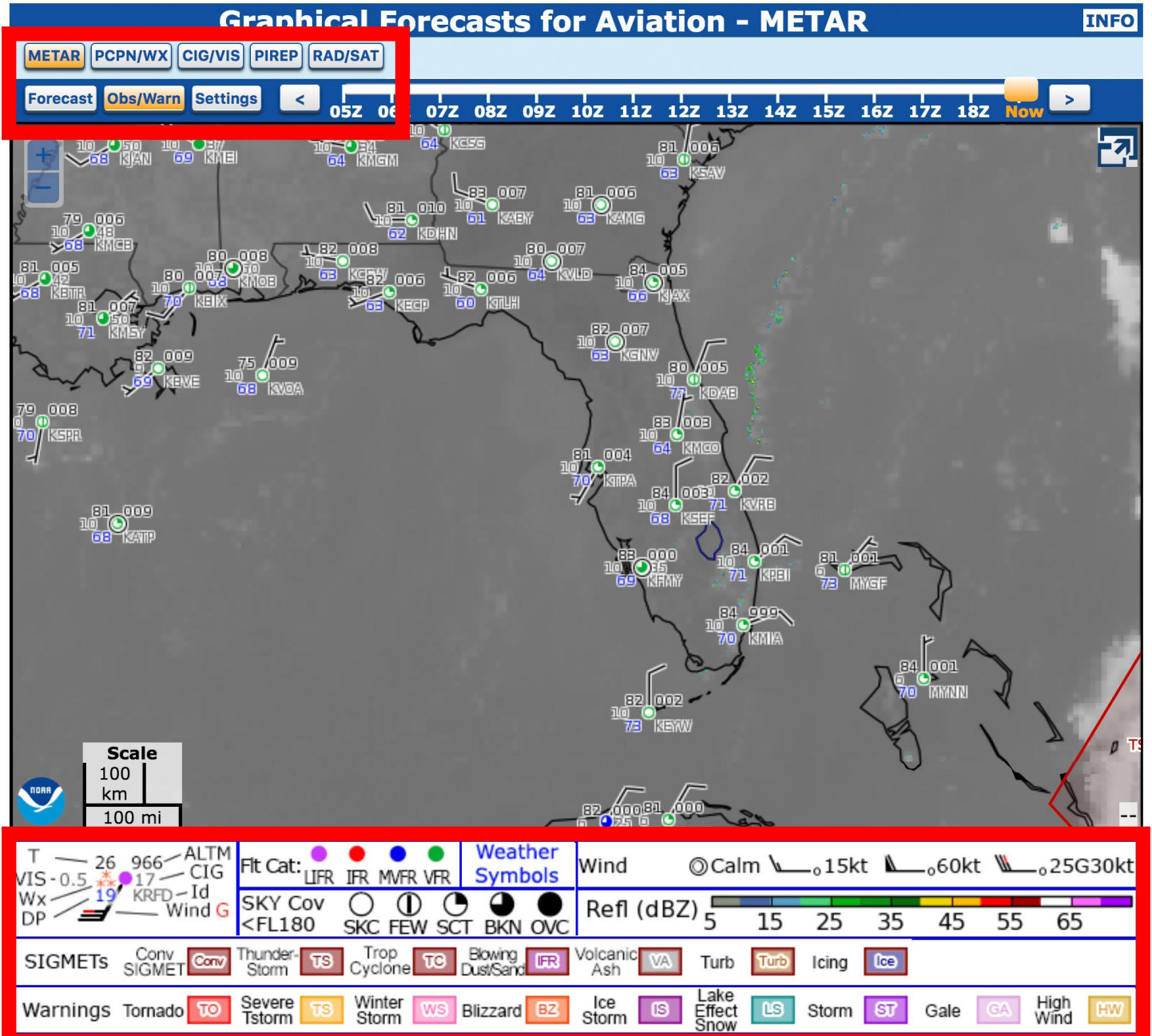
## GRAPHICAL FA OR "GFA" TOOL



All slides and charts are for educational purposes only. Not for navigation.



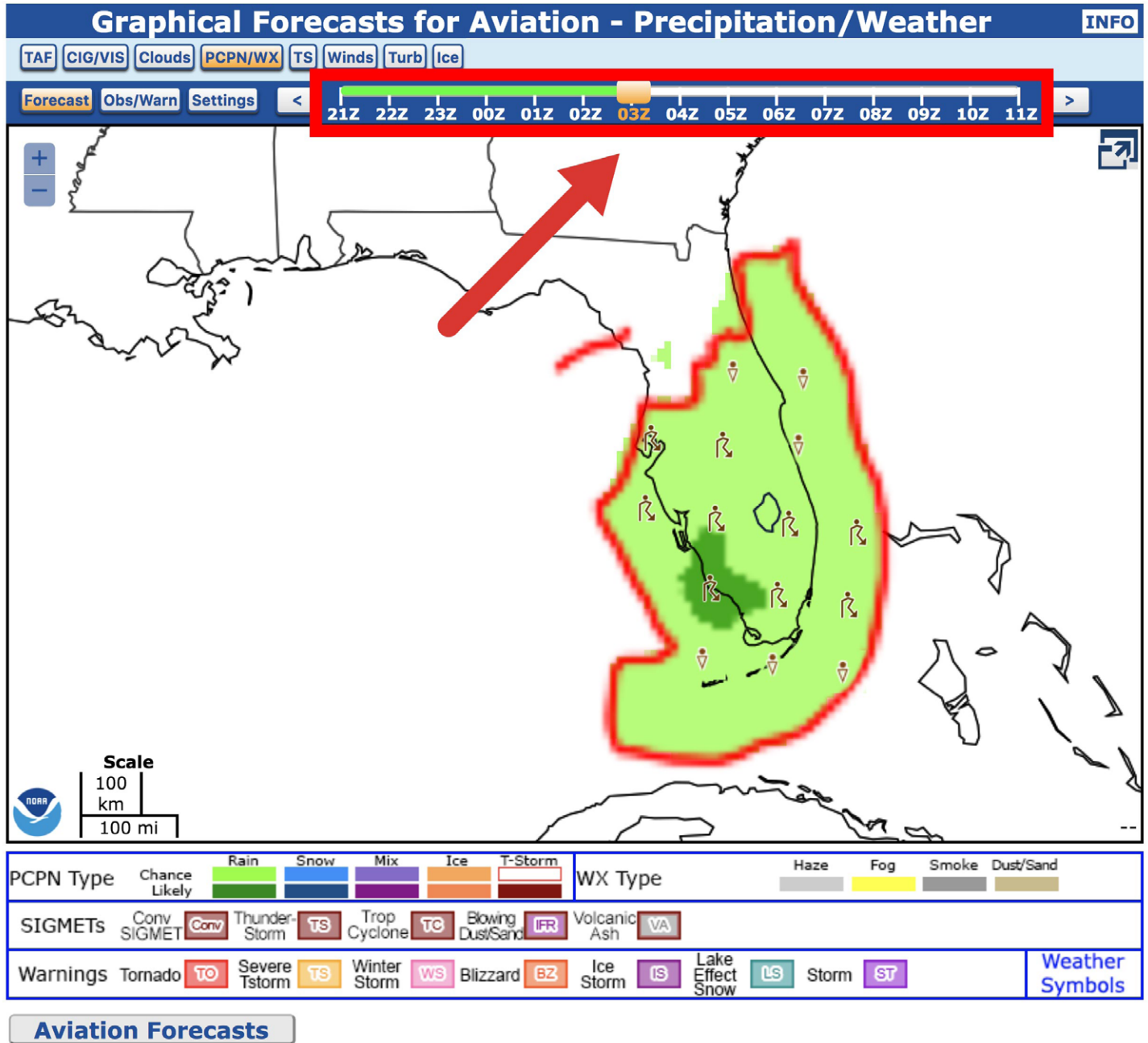
## GRAPHICAL FA OR "GFA" TOOL



All slides and charts are for educational purposes only. Not for navigation.



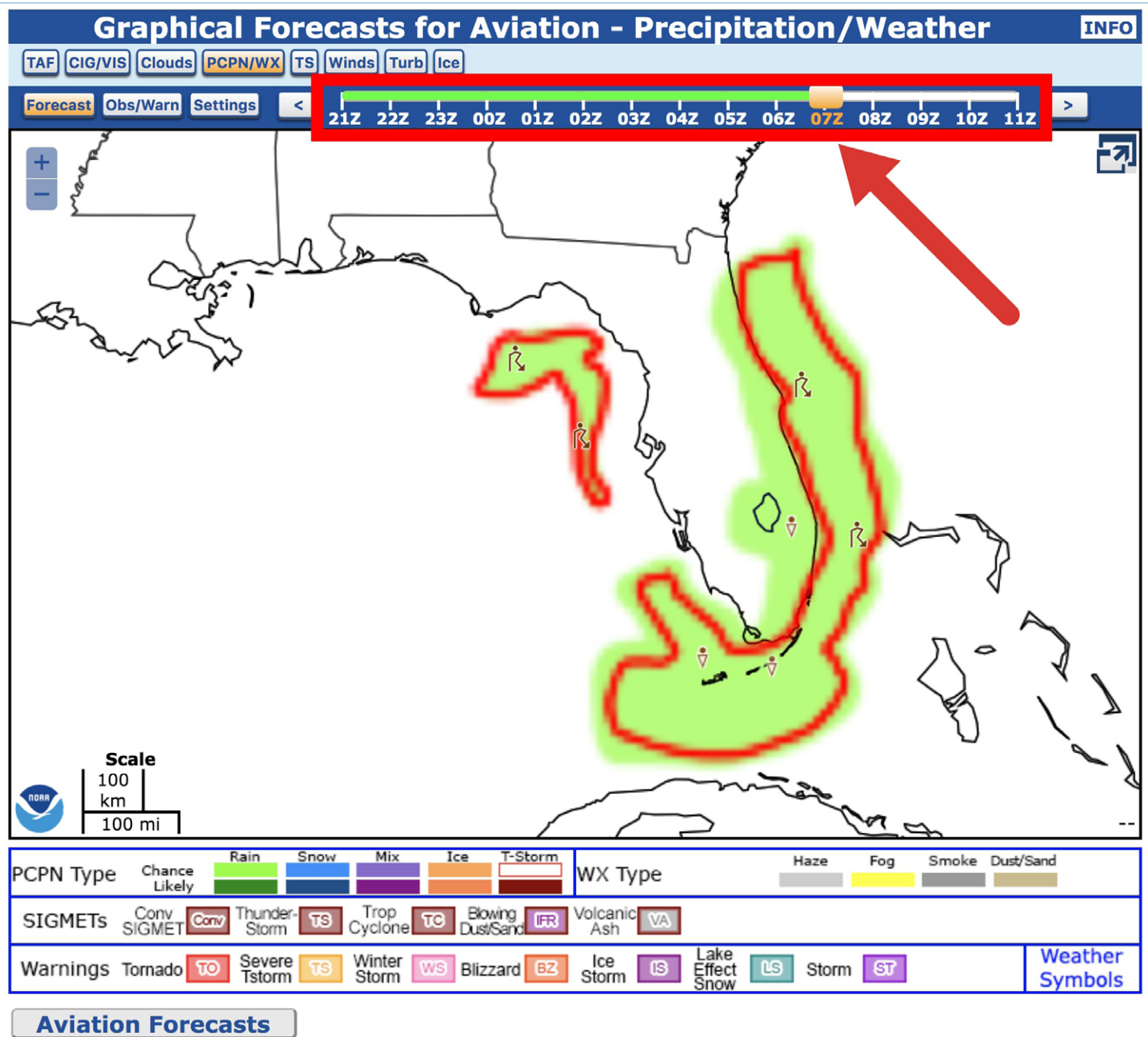
## GRAPHICAL FA OR "GFA" TOOL



All slides and charts are for educational purposes only. Not for navigation.



## GRAPHICAL FA OR "GFA" TOOL



All slides and charts are for educational purposes only. Not for navigation.



## NOTAMs

Sarasota (SRQ), Sebring (SEF), Kissimmee (ISM)

### Distant (D)

SRQ:

!SRQ **09/036** (KSRQ A0464/15) SRQ AD ALL SFC WIP GRASS CUTTING DLY  
0400-1000 1509280400-1510021000

!SRQ **09/032** SRQ OBST TOWER LGT (ASR 1036798) 272012.00N0823424.00W (3.7NM SSW SRQ) 287.7FT  
(281.8FT AGL) OUT OF SERVICE 1509241806-1510091805

!SRQ **07/037** (KSRQ A0353/15) SRQ TWY A5 BTN TWY A AND RWY 14/32 CLSD LGTD AND BARRICADED  
1507161034-PERM

SEF:

!SEF **09/254** - SVC EN ROUTE FLT ADVISORY SERVICE NOT AVBL. 24 SEP 10:00 2015 UNTIL PERM. CREATED:  
21 SEP 10:04 2015

!SEF **04/309** - CLOWN PARADE DAILY NEAR DEPARTURE END OF RWY 10 APR 12:47 2015 UNTIL 01 JAN 00:01  
2016. CREATED: 30 APR 12:48 2015

### FDC

!FDC 5/6386 FDC CHART CORRECT U.S. GOVERNMENT JACKSONVILLE VFR SECTIONAL  
AERONAUTICAL CHART, 96TH EDITION, EFFECTIVE 20 AUG 2015... REVISE EUFALA CLASS E5  
AIRSPACE TO THAT AIRSPACE EXTENDING UPWARD FROM 700 FEET ABOVE THE SURFACE  
WITHIN A 7.3 MILE RADIUS OF WEEDON FIELD AIRPORT (EUF) (31 57 05N, 85 07 44W)..  
1508201918-PERM

## Weather Updates

### METAR

KSRQ 311953Z 09013G19KT 10SM FEW055 29/17 A3012 RMK AO2

KISM 311950Z 08015G20KT 10SM BKN044 27/18 A3019

Location/ Date & Time/ Wind/ Visibility/ Precip/ Cloud Cover/ Temp & Dewpoint/ Altimeter setting

### TAF: (Note: Issued 0z, 6z, 12z 18z)

KSRQ 311730Z 3118/0118 05017G29KT P6SM BKN045

FM010300 05012KT P6SM FEW050

FM011600 07010KT P6SM FEW065 SCT250

KISM 311739Z 3118/0118 07018G24KT P6SM SCT040 BKN055

FM010100 03015KT P6SM SCT035 SCT070

FM010700 02009KT P6SM FEW035

FM011500 05011G19KT P6SM SCT045 SCT090



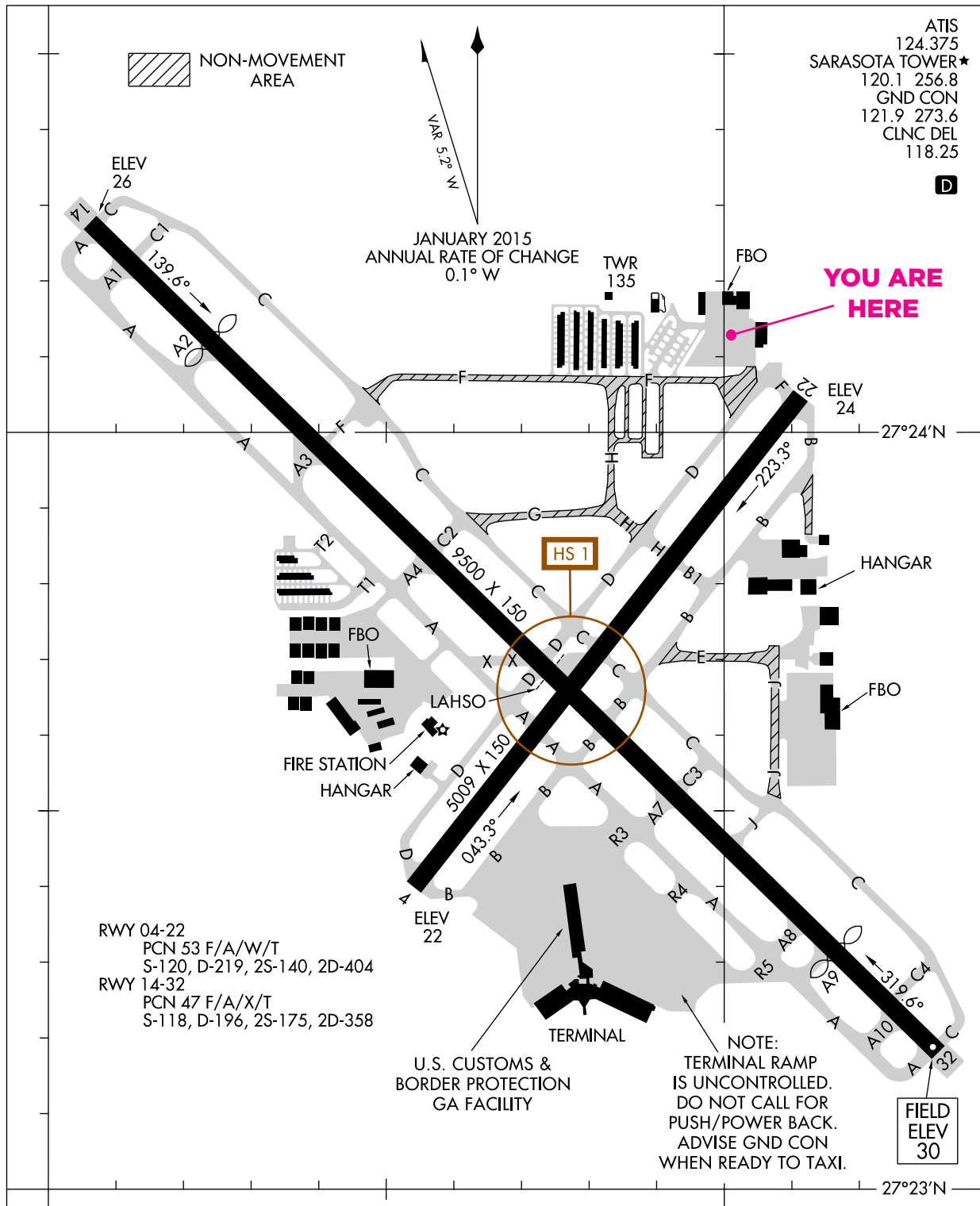
# SRQ AIRPORT DIAGRAM

15232

## AIRPORT DIAGRAM

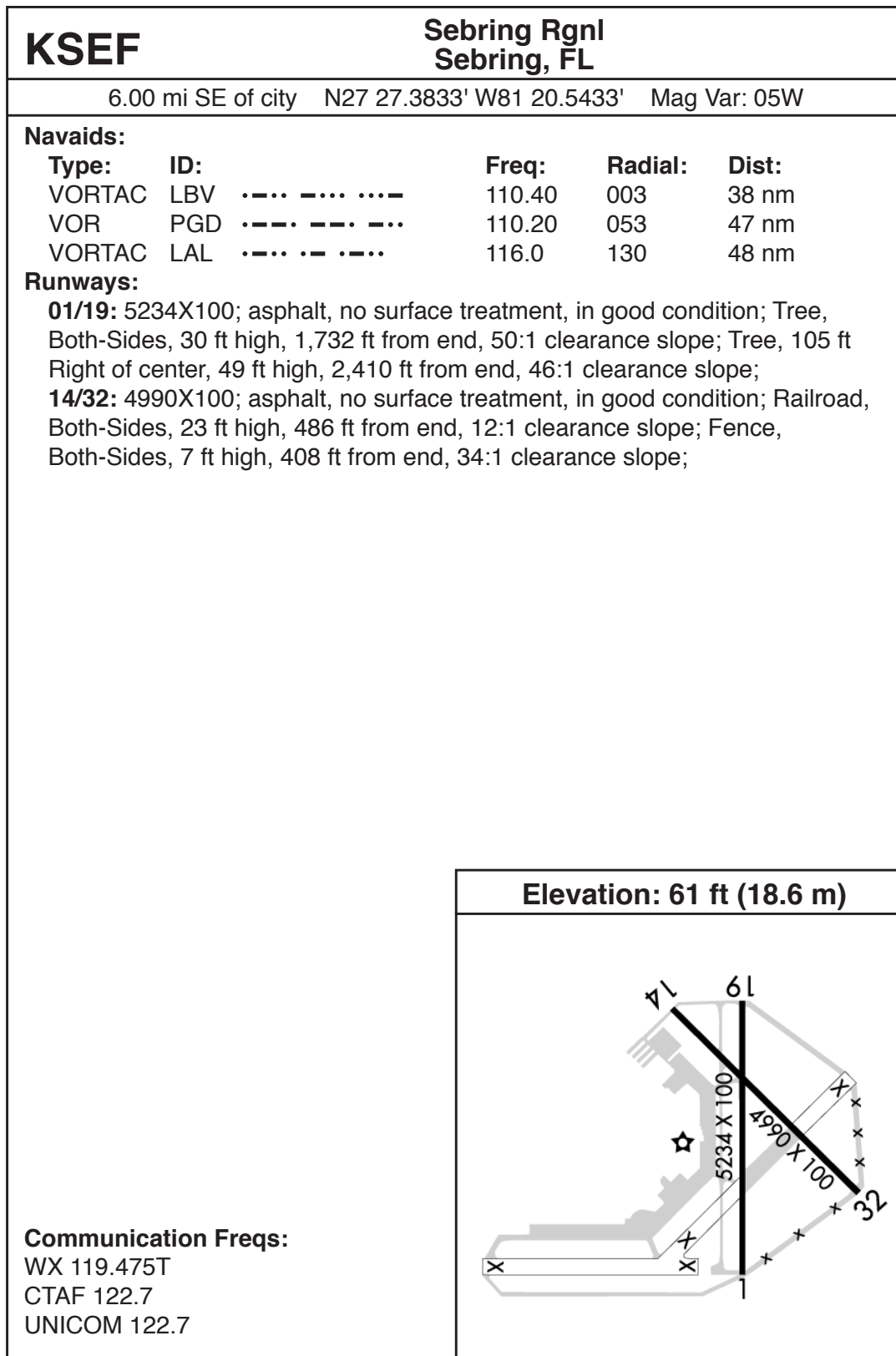
AL-640 (FAA)

BRADENTON INTL (SRQ)  
SARASOTA/BRADENTON, FLORIDA





## SEF AIRPORT DIAGRAM





## DISNEY TFR

!FDC 4/3634 ZJX PART 1 OF 2 SPECIAL SECURITY NOTICE. DISNEY WORLD THEME PARK, ORLANDO FL. THIS NOTAM REPLACES NOTAM 9/4985 TO REFLECT A TRANSPORTATION SECURITY ADMINISTRATION (TSA) WEBSITE UPDATE AND ADDITIONAL INFORMATION CONCERNING AIRSPACE WAIVERS. FLIGHT RESTRICTIONS IN THIS NOTAM COMPLY WITH STATUTORY MANDATES DETAILED IN SECTION 352 OF PUBLIC LAW 108-7 AS AMENDED BY SECTION 521 OF PUBLIC LAW 108-199. PURSUANT TO 49 USC 40103(B), THE FEDERAL AVIATION ADMINISTRATION (FAA) CLASSIFIES THE AIRSPACE DEFINED IN THIS NOTAM AS 'NATIONAL DEFENSE AIRSPACE'. ANY PERSON WHO KNOWINGLY OR WILLFULLY VIOLATES THE RULES PERTAINING TO OPERATIONS IN THIS AIRSPACE MAY BE SUBJECT TO CERTAIN CRIMINAL PENALTIES UNDER 49 USC 46307. PILOTS WHO DO NOT ADHERE TO THE FOLLOWING PROCEDURES MAY BE INTERCEPTED, DETAINED AND INTERVIEWED BY LAW ENFORCEMENT/SECURITY PERSONNEL. PURSUANT TO 14 CFR SECTION 99.7, SPECIAL SECURITY INSTRUCTIONS; ALL AIRCRAFT FLIGHT OPERATIONS, INCLUDING UNMANNED AND REMOTE CONTROLLED AIRCRAFT, ARE PROHIBITED WITHIN A 3 NMR OF 282445N/0813420W OR THE ORL238014.8 UP TO AND INCLUDING 3000FT AGL. 1410271500-PERM  
END PART 1 OF 2

!FDC 4/3634 ZJX PART 2 OF 2 SPECIAL  
THE RESTRICTIONS DO NOT APPLY TO THOSE AIRCRAFT AUTHORIZED BY AND IN CONTACT WITH ATC FOR OPERATIONAL OR SAFETY OF FLIGHT PURPOSES, DEPARTMENT OF DEFENSE, LAW ENFORCEMENT, AND AIR AMBULANCE FLIGHT OPERATIONS. FLIGHTS CONDUCTED FOR OPERATIONAL PURPOSES OF ANY DISNEY WORLD EVENT AND VENUE ARE AUTHORIZED WITH AN APPROVED WAIVER. AN FAA AIRSPACE WAIVER DOES NOT RELIEVE OPERATORS FROM OBTAINING ALL OTHER NECESSARY AUTHORIZATIONS AND COMPLYING WITH ALL APPLICABLE FEDERAL AVIATION REGULATIONS. ALL PREVIOUSLY ISSUED WAIVERS TO FDC NOTAM 4/4985 REMAIN VALID UNTIL THE SPECIFIED END DATE BUT NOT TO EXCEED 90 DAYS FOLLOWING THE EFFECTIVE DATE OF THIS NOTAM. INFORMATION ABOUT AIRSPACE WAIVER APPLICATIONS AND TSA SECURITY AUTHORIZATIONS CAN BE FOUND AT [HTTP://WWW.TSA.GOV/STAKEHOLDERS/AIRSPACE-WAIVERS-0](http://www.tsa.gov/stakeholders/airspace-waivers-0) OR BY CALLING TSA AT 571-227-2071. SUBMIT REQUESTS FOR FAA AIRSPACE WAIVERS AT [HTTPS://WAIVERS.FAA.GOV](https://waivers.faa.gov). 1410271500-PERM  
END PART 2 OF 2



